

MONTHLY MEMBERSHIP PROGRESS REPORT

LOCATION INDIA

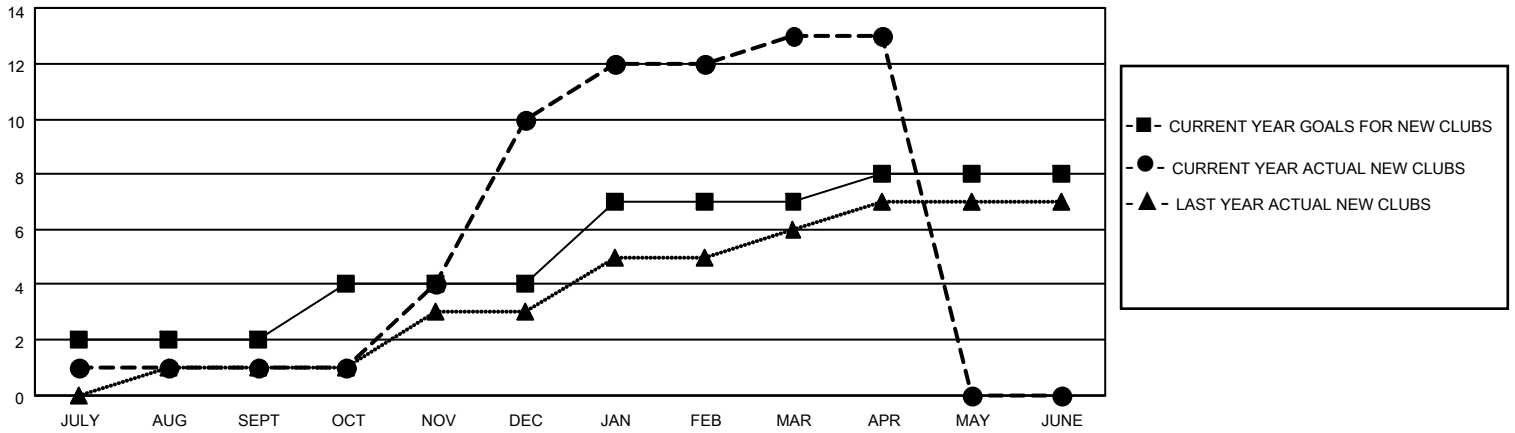
District 318 B

Results as of: 4/30/2021

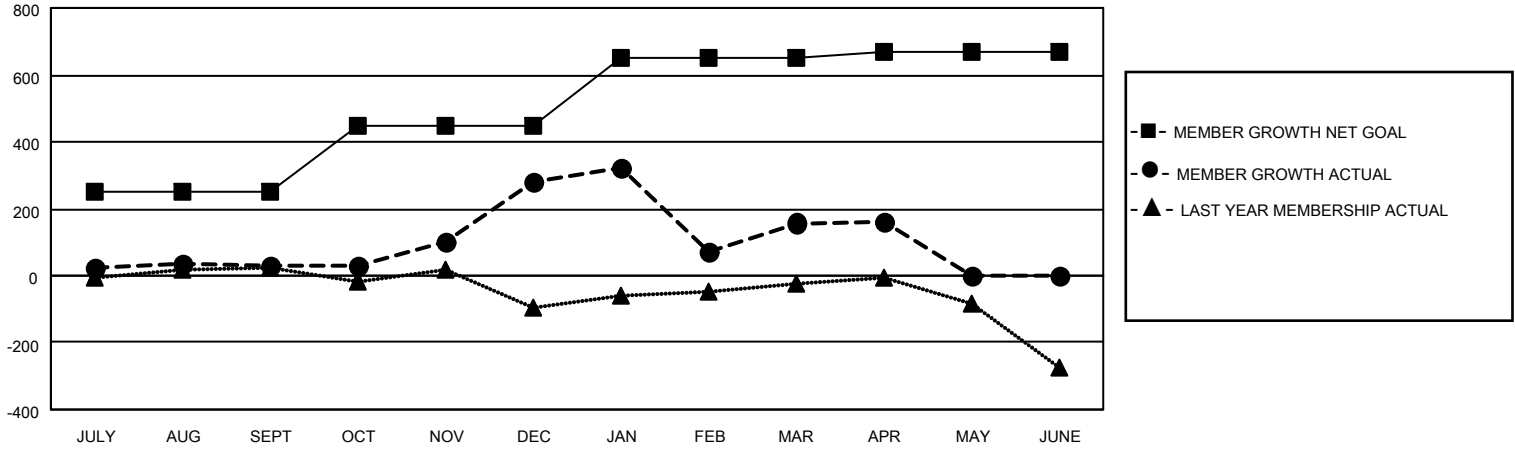
Clubs			
RESULTS FOR 2020-2021			
QUARTER	NEW CLUB GOAL	NEW CLUBS	DROPPED CLUBS
JULY/AUG/SEPT	2	1	0
OCT/NOV/DEC	2	9	0
JAN/FEB/MAR	3	3	17
APR/MAY/JUNE	1	0	0

Members			
RESULTS FOR 2020-2021			
QUARTER	MEMBER GROWTH NET GOAL	MEMBER GROWTH ACTUAL	DROPPED MEMBERS ACTUAL (including transfers)
JULY/AUG/SEPT	250	81	44
OCT/NOV/DEC	200	373	73
JAN/FEB/MAR	200	263	309
APR/MAY/JUNE	20	20	15

GOALS AND ACTUAL NEW CLUBS CUMULATIVE



GOALS AND ACTUAL MEMBERS CUMULATIVE



DROPPED CLUBS: 17	66 CLUBS OF 135 ADDED 1 OR MORE NEW MEMBERS	<u>GENDER DISTRIBUTION</u>
<u>DROPPED MEMBERS</u>	CLICK HERE FOR CUMULATIVE MEMBERSHIP DATA	MALE 3,282 (84.44%)
DECEASED 10		FEMALE 605 (15.56%)
CLUB CANCELLED 260		TOTAL FAMILY UNIT MEMBERS 971
OTHER 171		FAMILY MEMBERS PAYING HALF DUES 509
TOTAL 441		